

# 2025 Annual Report



**Inspire. Heal. Serve**

Mary & John Elliot  
Charitable Foundation  
Supporting The Elliot

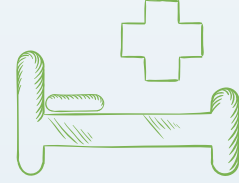
# 2025 at a glance

This year has brought exciting growth at The Elliot—from adding cardiac surgery to expanding labor and delivery and new programs at The Solinsky Center. Without you, these advancements in care at The Elliot would not be possible.



**23,080**

Mammograms performed



**15,985**

Admitted patients



**2,385**

Babies born



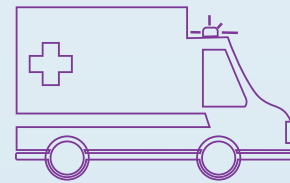
**82,940**

Urgent care visits



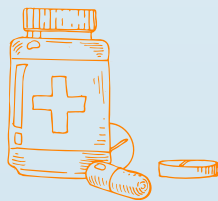
**131,308**

Physical & occupational rehabilitation treatments provided



**61,126**

Emergency department visits



**30,399**

Chemotherapy & radiation oncology treatments provided



**39**

Wellness & support programs offered to patients at the Solinsky Center for Cancer Care at The Elliot.

As we begin to look to the spring season, we've taken the time to look back at the prior year's accomplishments. We do so with a reflective sense of gratitude to many donors and friends like you, who gave so generously to support the compassionate and high-quality clinical care provided across Elliot Health System.

The mission of the Mary & John Elliot Charitable Foundation is to expand and improve the healthcare options available to our local community by supporting Elliot Health System resources through the kind and generous philanthropic giving of friends of The Elliot. The Elliot and the Mary & John Elliot Charitable Foundation are proud to be the leading nonprofit healthcare organizations serving our region's care needs.

In 2025, we are grateful for your support, which enabled your Elliot team to enhance our care for the community. Throughout this Annual Report you will learn more about these outstanding outcomes. Here are some highlights:

- Through the generosity of donors like you, we ensured the unique healthcare needs of mothers and newborns are met using the newest technology and equipment. The Elliot helped welcome nearly 2,400 babies to our community.
- Your support expanded specialty care as we opened the Elliot Multiple Sclerosis Clinic and added Cardiac Surgery to our Elliot Heart & Vascular Center to better serve our community.
- Your caring support continued to ensure patients facing a cancer diagnosis or dementia have the tools, resources, and caring support to navigate their disease.
- Donors supported the rebranded Elliot VNA in their mission of advancing care at home through personal empowerment, compassion, and exceptional service.

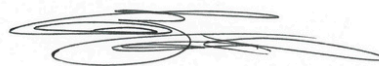
The mission of Elliot Health System is steadfast – Inspire Wellness, Heal our Patients, and Serve with Compassion in Every Interaction. Our caring friends and donors support The Elliot as we provide lifesaving and life-changing care, when our community needs us the most.

On behalf of the Elliot Health System Board of Directors, Senior Leadership Team, Board of Directors for the Mary & John Elliot Charitable Foundation, and our dedicated Foundation staff team, we thank you for your support and for being a special part of The Elliot.

In health,



W. Gregory Baxter, MD  
President and CEO  
Elliot Health System



David Bellman, Chair  
Mary & John Elliot Charitable  
Foundation





## Garden Party

On May 22, 2025 the Mary & John Elliot Charitable Foundation welcomed guests to its 8th Annual Garden Party at the Bedford Village Inn. The event raised over \$84,000 to support newborn and maternity care at The Elliot. The evening featured remarks from Manchester's Mayor Jay Ruais, Martha Dodge, Chief Nursing Executive and SVP Elliot Health System, Julie Fernandes and Meghan Poling, Elliot Maternity and Labor and Delivery Nurses. Elliot Smith, grateful patient and Mary & John Elliot Charitable Foundation Board member, also shared his family's exceptional experience of their son's birth.

Please join us this year on Thursday, May 7, 2026, at the Manchester County Club for another wonderful evening.

## Walk for Hope

Over 500 people joined us on June 8, 2025 for the 7th Annual Walk for Hope at Southern New Hampshire University. Through participants' incredible fundraising efforts and with the generosity of our community sponsors, \$50,000 was raised to support patient programs at The Solinsky Center for Cancer Care at The Elliot. We were lucky to have such wonderful weather for our teams to come together, walk and show their support for our community.

Each speaker offered touching stories and a look into just how impactful the programs that receive funding from the Walk for Hope are for every patient. Sonny Chea, a cancer survivor and grateful patient, shared his cancer journey which inspired hope in us all.

A very special thank you to our volunteers, sponsors, and team captains whose efforts and contributions made this event so successful. Thanks to them, every step taken and dollar raised will contribute directly to The Solinsky Center for Cancer Care at The Elliot and the well-being of the patients we serve.

Please join us again this year on Sunday, June 7, 2026.



## Golf Classic

The 26th Annual Elliot Golf Classic took place June 5, 2025 at Passaconaway Country Club in Litchfield. This year our golfers and sponsors raised over \$90,000 for several new pieces of equipment which supported programs for newborns in our Labor & Delivery, Maternity and Newborn Intensive Care Unit (NICU).

We were happy to welcome local event sponsors, donors, as well as many of our own Elliot physicians and staff at this event. We are grateful for the support of our Golf Committee, sponsors, vendors, and volunteers who continue to make this annual Golf Classic an enormous success!

We look forward to another successful day of play this year on Thursday, June 4, 2026.

## Delta Dental/Elliot Corporate 5k Road Race

Over 5,000 walkers and runners participated in this year's Delta Dental/Elliot Corporate 5K on August 7, 2025. In its 32nd year, the race is the largest road race in New Hampshire and one of the largest 5K races in New England! For the second year in a row, Elliot Health System had the largest corporate team of runners.

The race raised nearly \$16,000 for the Solinsky Center for Cancer Care at The Elliot. These funds will support 39 programs through the Solinsky Center for Cancer Care that help patients and their families as they navigate treatment.

Lace up your sneakers and get ready to race with us again this year on Thursday, August 6 2026.



## Elliot Health System Gala



On Friday, October 3, 2025 over 350 guests dressed for a sunny day at Elliot Health System's Palm Royale Gala at the DoubleTree in downtown Manchester. More than \$270,000 was raised to support various programs, including Elliot Health System's Comprehensive Multiple Sclerosis Clinic, Heart and Vascular Center, Child Life Program, and Maternal Health Program.

Friends, sponsors, and staff came together to celebrate all Elliot Health System's achievements and raise funds as we look toward the future. The Palm Royale theme had folks dressed to the nines under palm trees while guests enjoyed listening to heartfelt stories from Elliot's staff and patients.



Ryan and Elise Griffin shared their touching care experience with Elliot's NICU, the transport team, and every care team involved during the five weeks their twin girls spent in the NICU. Throughout their stay, the Griffins were given updates and reassurances, and were included in every conversation about their babies' medical plan. Today, Hallie and Betsy are happy and healthy one-year old little girls. Grateful for the care they received, the Griffin family is committed to giving back to the NICU team and providing support to fund new moms with comfortable post-partum chairs.

Each year our Gala celebrates the positive impact made on our community by the amazing care teams throughout Elliot Health System.

We hope you will plan to attend our 2026 Gala on Friday, October 9.

# Annual Awards & Distinctions

Recognition & Leadership

## Elliot Health System Awarded Bond Rating Upgrade

On November 9, 2025, Elliot Health System was issued an upgraded bond rating upgrade from A3 to A2, by Moody's Investors Service or Moody's Ratings, a recognized credit rating business that provides financial research to help illustrate an organization's financial well-being.

The upgrade to an A2 reflects the recent significant and ongoing accomplishments of the systems' care teams and their exemplary clinical delivery.

This notable achievement affirms our health system's position as a New Hampshire care delivery leader. It also reinforces the organization's strong reputation in clinical performance and legacy of advancing key clinical programs and services.



## Elliot Health System Selected as Business of the Year in Healthcare by Business New Hampshire Magazine

Elliot Health System is pleased to announce that it was selected as Business of the Year in the "large company" healthcare category by Business NH Magazine. Since 1991, Business NH Magazine and the New Hampshire Association of Chamber of Commerce Executives have recognized businesses and business leaders who demonstrate exemplary leadership in their industries and communities. Elliot Health System was recognized for its accomplishments in healthcare and the many ways its staff gives back to the community.



As the most comprehensive nonprofit health system in southern New Hampshire, Elliot is dedicated to serving its community. Each year, the system invests in programs, organizations, and community resources that align with the community's significant health needs, which are identified through the Community Health Needs Assessment conducted in a partnership with the city of Manchester Department of Public Health.

## Forbes Ranks Elliot Health System Among Best Employers in New Hampshire

Elliot Health System has been named one of the best employers in New Hampshire, according to Forbes and their 2025 America's Best-in-State Employers list. This prestigious award, presented in collaboration with Statista, the world-leading statistics portal and industry ranking provider, recognizes Elliot Health System as the top employer in the healthcare category, top New Hampshire-based company, and fourth Best-In-State employer.

This significant recognition reinforces the health system as both a cornerstone for healthcare and the preferred care delivery system in New Hampshire – locally, regionally and statewide – for employee satisfaction, setting a new standard for workplace excellence. It advances our vision to be the community's first choice to give and receive care.

# Annual Awards & Distinctions

Innovation & Clinical Excellence

## Advancing Care with Robotic Surgery

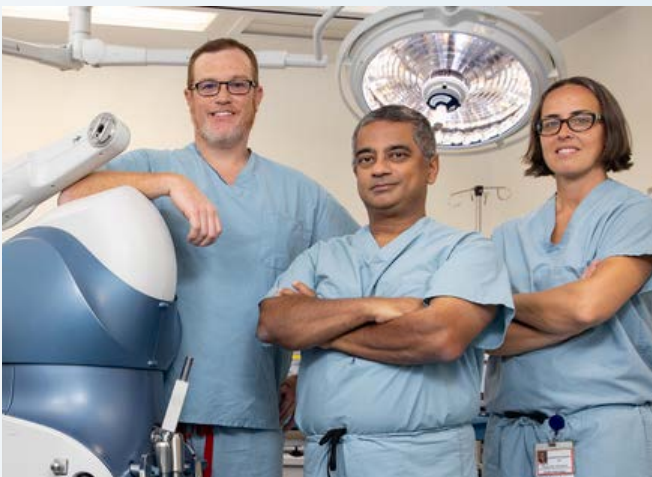
***Elliot recently marked a milestone as the first health system in New Hampshire and Northern New England to offer the MAKO robotic-assisted reverse shoulder replacement surgery.***

This significant achievement builds upon Elliot Health System's nearly eight years of success offering MAKO technology to treat patients with a variety of musculoskeletal and orthopedic conditions, which began with Elliot providing MAKO robotic-assisted knee replacement surgery in 2017 – the first health system in southern New Hampshire to do so. Since then, our orthopedic surgeons at Elliot Orthopaedic Surgery Specialists, have performed 1,952 MAKO robotic-assisted joint replacement procedures – reflecting the depth of expertise and care our surgeons bring to patients in our communities and region.



## The Elliot Receives Top ACS Surgical Quality Verification

In 2025, Elliot Health System was officially verified as a Comprehensive Hospital by the American College of Surgeons Quality Verification Program (ACS QVP). We are currently the only hospital – and just the second in the country – to earn this highest-level designation for surgical quality and safety. This recognition validates our long-standing commitment to surgical excellence and the collaborative work of providers and staff across departments.



The verification process is based on twelve rigorous standards outlined in the ACS's Optimal Resources for Surgical Quality and Safety manual. To earn this designation, Elliot underwent an in-depth, on-site evaluation spanning all surgical specialties – both inpatient and outpatient – and demonstrated systemwide alignment around continuous improvement, accountability, and outcomes.

This designation directly aligns with our system's vision: to be your first choice to give and receive care. It also strengthens our reputation locally and nationally, enhances our position as an employer of choice, and signals that Elliot is not merely keeping pace with national standards—we are helping to define them.

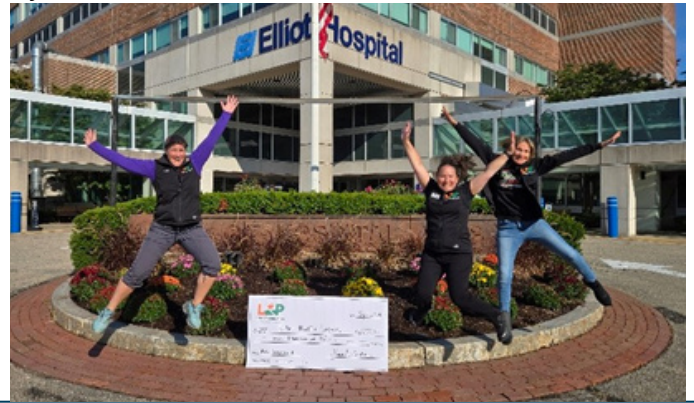
# Locke's Promise: A Story of Strength, Community, and Hope

When Sarah Locke was diagnosed with multiple sclerosis (MS) in 2019, she was overwhelmed. She was also determined not to let the disease define her. As Sarah adjusted to her diagnosis, she quickly realized how invisible MS can be—and how limited resources seem to be in New Hampshire. Sarah learned that people didn't know where to turn, and many didn't even know support existed and felt strongly about wanting to change that. While balancing life as a working mom and leading global social media marketing at Dell Technologies, she became determined to raise awareness and fill the gaps so no one in New Hampshire would feel alone in their MS journey.

Founded in 2025, Locke's Promise is committed to helping MS patients "thrive, not just survive." The organization provides direct financial assistance and resources that go beyond what insurance typically covers – from specialized mobility aids and funding transportation to accessibility modifications and other essential services. To date, Locke's events have raised nearly \$100,000 for MS research and community aid initiatives.

Knowing firsthand the invisible weight MS can carry, Sarah turned her personal experience into a grassroots effort to raise funds to support others. In 2023, she organized a "Climb the Peak for MS" fundraiser at Pats Peak Ski Area in Henniker, New Hampshire and raised \$16,000 for the National MS Society. This event has continued to grow and led to Locke's Promise Inc. being established.

*(continued on next page)*



## Cardiac Surgery at Elliot Health System



Scan QR code to learn more about our Heart and Vascular program

Heart disease is the leading cause of death in New Hampshire, accounting for nearly 1 in 5 deaths, or 20% of deaths, statewide. With cardiovascular mortality trending upward – particularly among adults over 45, our system responded by expanding our Heart and Vascular program with our Heart & Vascular Center, located at 4 Elliot Way in Manchester, to improve much needed access to advanced heart care and surgical services.

We also recently expanded our service offerings with the launch of open-heart surgery. The very first open-heart surgery case was performed at The Elliot in July, 2025 by Dr. Gerald Sardella, a cardiac surgeon with more than 30 years of experience, along with a highly trained multidisciplinary team. As of early November 2025, Dr. Sardella and the team

have already performed 19 open-heart surgeries – a testament to the impact we are making for patients requiring a high level of heart care!

Our Heart and Vascular program combine patient-focused care with a highly compassionate, team-based approach, guided by Dr. Carl Fier, and the region's most trusted clinical experts and surgeons. With the addition of cardiac surgery, we offer a full suite of services from advanced cardiac diagnostics and interventional cardiovascular care to complex surgery and cardiac rehabilitation. This positions Elliot Health System as a comprehensive, integrated heart care destination with deep experience to treat a wide range of cardiology, and vascular conditions. to residents across New Hampshire.

## Locke's Promise (continued)

Locke's journey with MS has also deepened her connection with her neurologist, Dr. Ann Cabot, and Elliot Health System. Dr. Cabot, one of the only fellowship trained Multiple Sclerosis (MS) specialists in the state, leads comprehensive MS care with the team at Elliot Neurological Specialties.

Through Locke's Promise's philanthropic partnership with the Mary & John Elliot Charitable Foundation, MS patients receiving care at the hospital are now directly linked to a resource that provides easy access to financial grants, mobility aids, emotional support, and more.

*"So many of us say we're fine, that we're strong, that we're pushing through—but the truth is, MS can make you feel invisible, isolated, and exhausted in ways the world never sees. I want people to know they're not alone in that. Your story matters. Your feelings matter. Find the people who understand. That's what I'm building with Locke's Promise—a place where no one has to carry this in silence."*

— Sarah Locke, Founder of Locke's Promise

## Mary and John Elliot Charitable Foundation Grants

We are incredibly honored to be the recipients of so many impactful grants supporting a wide variety of community needs, including workforce development, education support, and the transformation of outdated medical spaces. Highlighted here are some of the most impactful corporate grants awarded to the Elliot Health System this year. We look forward to the positive impact this funding will have on our healthcare workforce and beyond.

### Eastern Bank Foundation Grant

In July 2025, The Elliot was awarded \$100,000 by the Eastern Bank Foundation to support the Granite State PARTNERS Program. This program addresses New Hampshire's nursing shortage by expanding educational and training opportunities for low-income and underserved adults interested in pursuing a nursing career. This grant will aid the program by providing financial support to students who need assistance purchasing textbooks, paying for testing and licensing fees, affording childcare, arranging transportation, and managing other expenses that would be a barrier to continuing this program.



### Citizens Bank Impact Grant

The Elliot was awarded \$30,000 through a Citizens Bank Impact Grant which will also support the Workforce Development Department's Granite State PARTNERS Program. These funds will benefit nursing students by covering the cost of prerequisite course tuition and removing financial barriers to their healthcare career growth.



### Norwin S. and Elizabeth N. Bean Foundation Grant

The Bean Foundation awarded \$26,350 to Elliot Hospital to support youth career exploration opportunities with the Workforce Development Department. These funds will expand the Beyond the Stethoscope program, which is a 6-week summer healthcare career exploration program for high school students. In addition, transportation and meal assistance will be offered to students who would otherwise face financial barriers to participating. This grant will also launch Next-GEN Nursing Academy for middle school students, which will encourage an interest in healthcare careers through interactive lessons led by Elliot nurses.

### Dunkin' Joy in Childhood Foundation Joyful Spaces Grant

The Dunkin' Joy in Childhood Foundation awarded the Elliot a \$135,170 Joyful Spaces Grant to transform pediatric clinic spaces to be more child-friendly for those with sensory processing challenges and developmental disabilities. Upgrades include renovations to five exam rooms in the Pediatric Specialties department. In addition, the Child Life Services department plans to install a Draw Alive interactive gaming system. Both departments, as well as all three Urgent Care locations, in Bedford, Londonderry and Manchester, will also be provided with sensory cart resources to support pediatric patients with sensory and emotional regulation needs. Thank you to NGP Management – Scrivanos Network Dunkin' franchise for their support.

# The Davison Award for Philanthropy

## Honoring extraordinary generosity & leadership in support of Elliot Health System

The 2025 Davison Award for Philanthropy was awarded to Arthur Sullivan, Shane Brady, and the Brady Sullivan Properties team.

We are proud of our partnership with Brady Sullivan Properties and with Arthur & Shane. They have been longtime supporters of The Elliot. We are deeply grateful for their leadership giving to the Hope is Here Campaign, which supported the opening of the Solinsky Center for Cancer Care at The Elliot and most recently the expansion of our Emergency Department.

Brady Sullivan Properties takes great pride in their commitment to community involvement across the states where their properties are located. Their charitable efforts go beyond just financial donations. They include in-kind services and dedicate time to volunteer work. The organization also supports a wide variety of organizations, ranging from housing, healthcare and education to youth development, historic preservation, and veteran assistance.

To date, Brady Sullivan Properties has donated over \$10 million across New Hampshire to help make a meaningful impact in our community.



## Inaugural Bras for a Cause



The Elliot Breast Health team coordinated a new fundraising event in 2025, Bras for a Cause! The initiative raised nearly \$4,000 for The Elliot Breast Health Center! The contest featured 60 decorated bras which were displayed in the hallway outside the center. The display served as a great tool to increase awareness about the importance of regular mammograms.

To honor their efforts, the Breast Health team was presented with the Spirit of Philanthropy Award. This award is given to an Elliot employee or department who has gone above and beyond to support the Foundation through fundraising, raising awareness or volunteering. The Breast Health team embodies the spirit of giving. We are grateful for their partnership!

Nearly \$4,000 raised for  
The Elliot Breast Health  
Center



# Pearl Manor Fund

The Pearl Manor Fund is dispersed through grants providing assistance, comfort, care, and treatment to the elder population that includes but is not limited to, needs including medical care, safe housing, nutrition, independent living and transportation assistance.

The Fund committee received nearly \$446,000 in grant requests for the 2025-2026 grant year. The application process was a competitive process with many worthy projects and programs to consider. In addition, the need for support grows every year, especially with the increased burden of economic issues for our senior community members and concerns around social drivers of overall health.

The Elliot was pleased to award \$350,000 to seven community organizations – Solinsky Center for Cancer Care at The Elliot, Boys & Girls Club of Greater Manchester, The Mental Health Center of Greater Manchester, Easter Seals NH, St. Joseph’s Community Services/Meals on Wheels, Waypoint and Amoskeag Health.

## 2025 Pearl Manor Fund Grant Recipients



# Elliot Hospital Associates

The Elliot Associates, a large group of Elliot volunteers, strive to support the healthcare needs of the community with innovation, energy, and resilience through their efforts

In 2025, The Associates’ signature Trivia Night fundraiser celebrated its 5-year anniversary with another sell-out, crowd! The event raised \$105,019 for Elliot Health System.

The friendly competition among trivia buffs continues to draw friends and colleagues to compete for the first-place prize and bragging rights.

The Voluntares provided music and song for the Manchester area throughout the year, and the Elliot Sewing Ladies continued to sew purple hats for shaken baby syndrome awareness, dementia mats, and fidget balls to fulfill department needs across The Elliot.

In addition, the gift shop had a record-breaking year, and all proceeds continue to support healthcare advancements.

We thank The Associates for their dedication and enthusiasm. We are grateful for their outstanding support!



## A Note from the VP of Home and Community Services



As I reflect on the year, 2025 stands out as a defining time in our organization's history—a year of renewed identity, strengthened partnerships, and deeper connection with the community we proudly serve. This year, we enhanced the evolution of our Elliot Visiting Nurse Association by becoming **The Elliot VNA**.

This change was much more than a new name. It was a deliberate step toward aligning more closely with the Elliot Health System, reinforcing our shared commitment to delivering exceptional, compassionate care to the people of Manchester. For generations, our VNA has been welcomed into homes during some of life's most vulnerable moments. By becoming The Elliot VNA, we are bringing greater clarity to who we are, the system we are part of, and the unwavering pride we take in serving this community.

One of the most meaningful milestones of this transition was our November 2025 event, **Home, Hope, and Healing**. This gathering brought together community members, partners, and supporters for an evening centered on the real stories that define our mission. Three patients and their families courageously shared their journeys—stories of resilience, comfort, and life-changing support made possible through our care. Their voices reminded us why our work matters and why our presence in the community is so essential. The response from attendees was both humbling and energizing. Many shared that they had no idea of the breadth of services the VNA provides or the profound impact our team has on the lives of patients and their families.

As we move forward as The Elliot VNA, we do so with renewed clarity. We remain deeply honored to serve the Manchester community and Southern New Hampshire, and we are committed to expanding awareness of the vital role home-based care plays in healing, independence, and quality of life.

Thank you for your continued trust, partnership, and belief in our mission. Together, we will continue to bring home, hope, and healing to those who need us most.

- Catherine Frasco, Vice President, Home and Community Services

## The Elliot VNA Home, Hope, & Healing Event

In November 2025, patients, caregivers, and Elliot VNA employees gathered for an inspirational evening to celebrate the strengthened Elliot VNA brand, formerly known as VNA of Greater Manchester & Southern NH, an integral part of Elliot Health System. Guests were inspired by the stories shared from patients, staff, and caregivers across various services including home health, hospice, and maternal child health. Each story spoke to the power of compassionate care provided at home when patients and their families need it most. Thank you to all who joined us to honor our mission!



## Evergreens for The Elliot

The Elliot VNA hosted the Inaugural Evergreens for The Elliot in early December 2025. This festive fundraiser and celebration inspired nearly \$18,000 in support of hospice care provided by the The Elliot VNA. Thank you to our event sponsors and those individuals and organizations who donated trees, wreaths, and their precious time and creativity!



# The Elliot VNA 2025 Donors

Ms. Debra Achramowicz  
Mrs. Gwen Airgood  
Patrick Aitcheson  
Ms. Mary Ann Aldrich  
Ms. Juanita Alvarado  
Mr. William Andrade  
Anonymous (11)  
Joyce Aubin  
Town of Auburn  
Connie Barton  
Constance Bazarisky  
Mr. Donald J. Bealko  
Mr. Henry Beaudry  
Mr. Donald M. Beaulieu  
Mr. David E. Beaulieu  
Sydney Becker  
Mr. Kenneth Belanger  
Donald Berlekovic  
Ms. Theresa Bianchi  
Ms. Julie Blake  
Robert & Lorraine Bleau  
Jane Blue  
Mr. & Mrs. Myles Boone  
Ms. Jennifer Borislow  
Mr. Michael Bornstein  
Mr. Roger L. Bournival  
Cathy Bowen  
Jeffrey & Marie Bowers  
Mr. & Mrs. Edward V. Bowler  
William & Simone Boyd  
Ms. Cecile Brasley  
Rev. Barbara Brawley  
Ms. Lynne M. Brechneck  
Ms. Donna Briggs  
Ms. Karen Brock Amoah  
Emily Brodeur  
Sanders Burstein  
Robert Byrnes  
Mr. Ronald Caissie  
Town of Candia  
Mr. & Mrs. Leo M. Capillo  
John & Kathryn Carey  
Ms. Mary Casey  
Kathan Cavazos  
Ms. Sarah Chaffee  
Raymond & Paula Chambers  
Ms. Jane Charlesworth  
Sir/Madam  
Tami Chase  
Mr. Richard Chase  
Ms. Lizzy Chauvette  
Ms. Gail Cherochak  
DG Christensen  
Mrs. Ellie Cochran  
& Mr. David Cochran  
Salvatore & Kelly Coco  
Ms. Deb Collins  
Mrs. Jessica Connare  
Mr. Joseph Constance, Jr.  
& Mrs. Mary Constance  
Mrs. Ruth S. Conway  
Mr. Leon M. Cornell  
Nancy Cornwall  
Andrew Cornwall  
Bruce & Mary Corsetti  
Mr. Thomas Cote &  
Mrs. Lynnette Cote  
Cremation Society of NH, Inc.  
Paul & Florence Cronk  
Ms. Linda Croteau  
Mary Cullen  
Mr. Joseph Dabrowski  
Mr. & Mrs. Peter A. Dallas  
Colleen Danault  
Ms. Valerie Danielson  
Jane Darnell  
Daryl & Janet Dean  
Mrs. Evelyn Decota  
Town of Deerfield  
Dr. Steven Demers  
Ms. Carol Derosia  
Ms. Michelle Desjardins  
Holly L. Desrosiers  
Mr. Sean Doherty  
Mr. & Mrs. Donald W. Dollard  
Sandra Donigian  
Mr. Thomas Dovholuk

Rosa Draper  
Michael & Diana Driscoll  
Ms. Jennifer Drover  
Ms. Denise Duchesne  
Ms. Amy Duhaime  
John & Maureen Duke  
Mr. Robert Dupuis  
Ms. Teresa Durand  
Joseph & Jan Eaton  
Theresa Ellingson  
Mrs. & Mr. Eileen Elliott  
Mr. Richard A. Elwell, Jr.  
& Mrs. Debra A. Elwell  
Ms. Joan Emerson  
Jeffrey Erdman  
Estate of Vasilike Sotiriou  
Danielle Evansic  
Mrs. Sheila A. Evjy & Dr. Jack T. Evjy  
David & Cathy Fales  
Ms. Alisha Feightner  
Mrs. Barbara B. Feloney  
Ms. Jennifer Finn  
Carl & Janice Finton  
Firefly American Bistro & Bar, LLC  
Claire Flanagan  
Mr. John Fogarty  
Mr. & Mrs. Stephen F. Foster  
Ms. Catherine Frasco  
Bennett Freeman  
Mr. Max Friedman  
Ms. Donna M. Frizzell  
Ms. Karissa Frost  
Ms. Jennifer Gaffney  
Mr. Gregory Gagne  
Elizabeth Garland  
Cathryn Gartley  
Marilyn Gerrell  
Mr. & Mrs. Michael J. Gleason  
Mrs. & Mr. Fran Goldberg-Cohen  
Jacoba Goldman  
Harold Goldstein  
Jaye Goodwin  
Justin Gorham  
Ms. Cheryl Graff  
Michelle Gray  
Ms. Yvonne Green  
Pauline Griffin  
Ms. Claudia M. Grilli  
Mr. & Mrs. David Grimard  
Brenda Guilmett  
Danielle Gunther  
Mrs. Anne-Marie Hafeman  
& Mr. Kevin Hafeman  
The Halcyon Club  
Mr. James Hammond  
Ms. Leigh-Ann Hanlon  
Mr. Raymond A. Hannemann  
Harold Harris  
Carol A. Hauser  
Linda Heath  
Richard & Diane Hebert  
Mr. & Mrs. Gerard Heon  
CJ Herman  
Mr. & Mrs. John C. Herper  
Stephanie Hewitt  
Rhonda Hill  
Dr. Paul W. Hoff & Mrs. Selma  
Naccach-Hoff  
Judith Hohenadel  
Ms. Maria Holland-Law  
Kathleen Holt  
Home Care, Hospice & Palliative  
Care Alliance of NH  
Attorney James C. Hood  
& Mrs. Elise Hood  
Ms. Holly Horst  
Denise Houde  
Ms. Susan Howe  
Geoffrey Hudson  
Mr. & Mrs. Donald B. Hunter  
Ms. Catherine Hutchins  
Mr. Burton Hyman  
& Mrs. Suzanne Hyman  
Mr. Daniel Jackman  
Mrs. Joanne Jeannette  
& Mr. David Jeannette  
Mr. Samuel Jenkins

Mrs. Amy Jenkins  
Leslie Johnson  
Mr. Charles Johnson  
Ms. Beverly Johnson  
Ms. Kristina Johnston  
Mr. Ronald Jones  
Lorrilyn Juergens  
Mrs. Patricia Kalik  
Mary Kazanowski  
Mary Kazanowski  
Mr. William Kelley  
Alyssa Kence  
Stephen & Georgette Kent  
Bonnie Kidder  
Ms. Pauline King  
Ms. Carol E. Klardie  
Ms. Christine Kokkinos  
Ms. Kate Kokosinski  
Dorothy Krasner  
Ms. Victoria Kuhn  
Mr. & Mrs. Raymond A. Labore  
Lorraine Labore  
Ms. Deb LaFavre  
Christina Lafferty  
Ms. Holly Lafoe  
Mr. & Mrs. Stephen Lagerquist  
Ms. Sheila Lambert  
Ms. Michelle Lambert  
Mr. Dennis Landis  
Gail Laprade  
Ms. Diane Lavoie  
Lynne Lawrence  
Dr. Marc F. Leclair  
& Mrs. Maryann Leclair  
Christopher & Sylvia Lennox  
Judith Levasseur  
Faith Levesque  
Howard & Charlene Levine  
Mr. Paul Lezberg  
Julie Lidano  
Marie Linebaugh  
Roz Lockwood  
Longchamps Electric Inc.  
Nancy Ludwig  
Madeleine Lussier  
Mr. & Mrs. Maurice Lussier  
Jocelyn Mahoney  
Ms. Colleen Mahoney-Baxter  
Michael & Amy Marshall  
Ms. Jean Martel  
Ms. Eva L. Martel  
Ms. Lynda Martin-Heaney  
Mr. Christopher May  
Janice McCabe  
Betty McClintock  
Marissa McLaughlin  
Ms. Kathryn McQueeney  
Ms. Erin Meagher  
Ms. Patricia Meyers  
Ms. Elaine M. Michaud  
Ms. Tammy Mickelson  
Rhonda Millette  
Edward & Mary Milliken  
Anonymous  
Spiros Mitsopoulos, MD  
& Mrs. Sharon Mitsopoulos  
Ms. Margaret Mons  
Mr. Robert Morris  
Gary Morse  
Anthony Moutinho  
Burton & Rebecca Mowbray  
Patrick & Judith Mustoe  
Ms. Pamela A. Naum  
Melissa Nelson  
Netsmart Technologies  
Molly O'Donoghue  
David & Fredda Osman  
Stephanie Ouellette  
Mr. & Mrs. Ross Palmes  
Dimitrios Panacopoulos  
Mr. William J. Pananos  
Steven Paris  
Dana Paris Mahoney  
Ms. Amy Parthum  
Mr. Charles Perkins  
Ms. Alison Perrella  
Catherine Phamduy

Mr. Mark Piaseczny  
Amy Pilotte  
Scott R. Plourde  
Mrs. Janet L. Pollock  
Mariana Poore  
Ms. Kathleen Powell  
Helen M. Pratte  
Ms. Carol Pressman  
Mr. & Mrs. Glen Primeau  
Ms. Rhena R. Prince  
Mr. & Mrs. David R. Proulx  
Chad Putney  
Ms. Kelli M. Rafferty  
Therese Ramsey  
Kevin & Susan Reilly  
Kristen Remick  
Chandra A. Rheault  
Ms. Carol Richards  
Ms. Lara Richardson  
Ms. Carolyn Richmond  
Ms. Carol Riley  
Sherry Robinson  
Mr. Robert R. Robitaille, Sr.  
& Mrs. Joyce Robitaille  
Sol Rockenmacher, MD  
& Mrs. Linda Rockenmacher  
Danielle Rodriguez  
George & Barbara Rom  
Ms. Kristine Rose  
Samuel & Esther Rosenzweig  
Mrs. Cindy Ross  
Mr. & Mrs. Alan S. Rudnick  
Rudolph Friedmann, LLP  
Mr. Arthur E. Rugg  
Jennifer Rydeen  
Mr. & Mrs. Mark Sanborn  
Donna Sargent  
Susan Schechter  
Mr. & Mrs. Steven W. Schubert  
Mr. Owen Scollan  
Norman Selander-Carrier  
Christopher & Linda Sharpe  
Mrs. Kristin Shaw  
Shaw's Supermarket  
Faye Shevel  
Ms. Lois Shulman  
Ms. Jane Silberberg  
SimiTree Acquisition, LLC  
Sue Simon  
Kathryn Simpson  
George Sioras  
Ms. Meagan L. Smart  
Barbara A. Sobol  
Denise Soboleski  
Mr. & Mrs. Paul M. Soucy  
Ashley Springman  
Ms. Andrea Srebnik  
Yvette St. Pierre  
Daniel Stephens  
Kelsey Stergiou  
Mr. Thomas Stevens  
Ms. Laurie Sulger  
Christina Tedeschi  
Ms. Alison Teres  
Ms. Nicola Tessier  
Marc & Therese Theriault  
Ms. Jeanne Thibeault  
Mrs. M. Joanne Tiedemann  
Mrs. Nancy Tourigny  
Mr. & Mrs. Michael S. Turilli  
Turnstone Corp  
Ms. Claire L. Vanasse  
Lynne Vassalotti  
Emily Veverka  
Elaine Vigneault  
Ms. Sharon A. Wainright  
Ms. Elizabeth R. Waldie  
Lt. Colonel & Mrs. John Walker  
Ms. Dina P. Weber  
Kelly Weene  
Mr. John Wenner  
Mandi Werner  
Carolyn Werner  
Susanna S. Wilkens, MD  
Don Winn  
Mr. Jeffrey Woodruff  
Ms. Megan Wrigg  
Ms. Judi Zoldan



# President's Society

The Elliot Health System President's Society acknowledges individuals and organizations who support The Elliot at levels of \$1,000 and above. The philanthropic leadership of this group allows The Elliot to continue to expand services and provide the latest technology, close to home for our greater Manchester community. We are humbled and grateful for their generous support.

Uri Ahn, MD & Mrs. Kerri Ahn  
AIRGAS, an AIR Liquide Company  
AmeriHealth Caritas New Hampshire  
Ameriprise Financial Services, Inc.  
Amoskeag Anesthesia, P.L.L.C.  
Mr. Dick Anagnost & Mrs. Demetria Anagnost  
Anagnost Companies  
Anonymous (5)  
Anthem Blue Cross and Blue Shield of NH  
Aqueduct Technologies  
Ms. Kirsten Arnold  
Mr. Cory Arsenault  
Mr. & Mrs. Bryan Ash  
AstraZeneca Field Headquarters  
Aya Healthcare  
Baker Newman Noyes  
The Baldwin  
Ms. Deborah Balmer  
Bank of America Corp  
BankProv  
Greg Baxter, MD & Mrs. Diane Baxter  
Bean Foundation  
Bedford Commons OB-GYN, P.A.  
Mr. David Bellman  
Bellman Jewelers  
Bellwether Community Credit Union  
Alice Bentley  
Mr. & Mrs. Jim Berry  
Mr. Elvis Biso  
John Bissonnette, MD  
BOND  
The Botnick Family Foundation  
Ms. Teisha Boyce  
Christopher Brauer, MD  
John Brown  
Charlotte Brown-Zalewa  
Malgorzata D. Bulanowski, MD & Mr. Piotr Bulanowski  
Dr. Todd Burdette & Mrs. Louisa Burdette  
CGI Business Solutions  
Change Foundation  
Mr. Michael J. Chen  
Manish Chopra, MD  
Chris Nelson Contracting  
Citizens Bank  
Ms. Sharon Clohesy  
Coca-Cola Beverages Northeast  
Mrs. Ellie Cochran & Mr. David Cochran

Mr. Stephen Cornish  
CR's The Restaurant  
Mr. David J. Cuzzi & Mrs. Christina M. Cuzzi  
Dahlquist Trust Fund  
Doug and Genie Dean  
Kevin Desrosiers, MD & Mrs. Holly L. Desrosiers  
Attorney Clara Dietel & Mr. Robert Dietel  
Digital Insurance, LLC  
Ms. Martha Dodge  
Ms. Megan Dumont  
Eastern Bank Charitable Foundation  
EchoStor Technologies, Inc.  
Eckman Construction Company, Inc.  
Edward Jones Investment Services  
Mr. Stephen F. Eldridge  
Mr. & Mrs. Justin Eldridge  
Eldridge Investment Advisors  
Elevance Health, Inc.  
Elliot Hospital Associates  
Mr. Jason Elliott & Mrs. Eileen Elliott  
Empower Retirement  
EPIC  
Dr. Jack T. Evjy & Mrs. Sheila A. Evjy  
Ms. Alisha Feightner  
Mr. Thomas W. Feller  
Dr. Carl Fier & Mrs. Susanna Fier  
FinThrive  
Five North Realty Group Inc.  
Mr. Chris Fogg  
Ms. Louise G. Forseze  
Frank O. Warren, Jr., M.D. Chapel Fund  
Mr. Brian M. Frechette & Mrs. Erin Frechette  
Mrs. Lorraine Gallagher & Mr. Thomas Gallagher Geiger  
Gilead Sciences  
Mr. Charles S. Goodwin & Mrs. Jaye Goodwin  
Mr. John Grady  
Mr. Pat Graham & Mrs. Cynthia Graham  
Mr. & Mrs. Darrell M. Grande & Family  
Granite State Plumbing & Heating, LLC  
Mr. Ryan Griffin and Mrs. Elise Griffin  
Group 1 Automotive  
Ms. Christina Haag, ARNP  
Mr. Kevin Haggerty & Mrs. Lisa Haggerty  
Haggerty's Cleaning Service, Inc.  
Mr. Mark J. Hagopian & Mrs. Susan Hagopian  
Hampshire Fire Protection Co., LLC

# President's Society

Lara Hanlon, MD  
Ms. Leigh-Ann Hanlon  
Ms. Pamela Harvey  
Ms. Erin Haskell  
Henry F. Berry Charitable Trust  
Hillsbrook Village  
Dr. Paul W. Hoff & Mrs. Selma Naccach-Hoff  
Nancy Husarik, MD  
Mrs. Sabine Hynds  
Interstate Electrical Services Corp.  
IQVIA Inc.  
Ira Subaru of Manchester  
Mr. David Jeannette & Mrs. Joanne Jeannette  
Ms. Denise Jeffery  
Ms. Sonia Joslin  
Dr. Emese Kalnoki-Kis  
Dottie & William Kelley  
Mr. & Mrs. David J. Kelso  
Ms. Sharon Kostansek  
Krantz Family Nursing Scholarship Fund  
Mr. Jamas LaFreniere  
Mr. Brian Leborgne  
Locke's Promise, Inc.  
Mrs. Amanda Lockhead  
LogixHealth  
Dr. & Mrs. Neal Luther  
The M&T Charitable Foundation  
M&T Bank  
Mr. Andrew MacWilliam  
Manchester Kiwanis Children's Fund, Inc.  
Manchester OB/GYN Associates  
Marcam Associates  
Ms. Eva L. Martel  
Deborah McKay  
Cheryl McKenney  
McLane Middleton  
Mr. Arthur Meconi & Mrs. Jennifer Meconi  
Microsoft  
Millennium Running, L.L.C.  
Holly Mintz, MD  
Meghna Misra, MD  
Ms. Molly Mortimer  
National Partners in Healthcare, LLC  
New Hampshire Prostate Cancer Coalition  
New Hampshire Ski Club  
New York Life Insurance Company  
Nixon Peabody L.L.P.  
Northeast Delta Dental  
Northeast Rehabilitation Hospital Network  
Novartis Pharmaceuticals Corporation

One Digital  
Mattie and David Paul Charitable Fund  
Mr. David Phillips & Mrs. Christine Phillips  
Pinnacle Mortgage Corp.  
Scott Pippin  
Mrs. Beverly Primeau & Mr. Glen Primeau  
Brian Quinn  
Radiation Oncology Associates, P.A.  
Ms. Kelli M. Rafferty  
Mr. Thomas Raffio  
Dick & Marsha Rawlings  
Reos Sales & Service, LLC  
RiverStone Resources LLC  
Chris Roberts  
Mr. Chuck Rolecek & Ms. Kristy Blundell  
Ms. Judith P. Ronshagen  
Mr. & Mrs. Danny Rosario  
Ms. Adrienne Rupp  
Mrs. Anna Sabato  
SEI Private Trust Company  
Shields Health Management Company, LLC  
Mr. Robert Singer  
Mr. & Mrs. Elliot J. Smith  
Mrs. Nicole Smith  
Mr. Joseph Soldano  
Mr. Kenneth S. Solinsky & Mrs. Grace S. Solinsky  
Southern New Hampshire Radiology Consultants, P.C.  
Ms. Lori Spence  
Spindel Eye Associates  
Sprague Operating Resources  
Dr. Shawn W. Stapp & Dr. Brenna Stapp  
Mr. Kurt Strandson & Mrs. Hollie Strandson  
Mr. Tom Sullivan, Jr.  
Jonathan Tavares  
The Tenn Family  
Tenn And Tenn, P.A.  
Sam K. Theodosopoulos  
Mr. Rudra Timsina & Mrs. Myra Timsina  
Triangle Credit Union  
Mr. Michael S. Turilli & Mrs. Deborah Turilli  
Mrs. Karen A. Van Der Beken & Mr. David P. Van Der Beken  
Wadleigh, Starr & Peters, P.L.L.C.  
Douglas J. Weckstein, MD & Mrs. Tara T. Weckstein  
Mr. & Mrs. David G. Wenger  
Ms. Danielle Wilson  
Hollis Wilson  
Winbrook  
Scott Wisniewski  
Mrs. Lynn Zimmerman & Mr. Brian Zimmerman

# Community Support

Support for The Elliot from our community – patients, corporations, small businesses, and foundations is a testament to our compassionate staff and the exceptional care and services we provide our patients.

Mr. & Mrs. William F. Abbott  
Ms. Sally A. Adams  
ADP Foundation  
Airbrush Unlimited, Inc.  
AIRGAS, an AIR Liquide Company  
Nicole Aldridge  
Alejandro Cesar Events, LLC  
Ms. Jennifer A. Alicea  
Ms. Ruth Allen  
Ms. Marilyn Altabet  
American Online Giving Foundation  
AmeriHealth Caritas New Hampshire  
Ameriprise Financial Services, Inc.  
Amoskeag Anesthesia, P.L.L.C.  
Mr. Dick Anagnost  
& Mrs. Demetria Anagnost  
Anagnost Companies  
Ms. Jeanette Anctil  
Ms. Jeri Anderson  
Ms. Judith Anderson  
Mr. David W. Anderson  
& Mrs. Linda G. Anderson  
Ms. Lyn Anderson  
Lindsay Andronaco  
Anonymous (9)  
Anthem Blue Cross and Blue Shield  
of New Hampshire  
Mr. David Anthony  
Aqueduct Technologies  
Aroma Joe's  
Aroma Sparks  
Mr. Cory Arsenault  
Mr. Larry Arsenault  
Mrs. Caitlin Arsenault  
Ms. Heather Asadoorian  
Mr. & Mrs. Bryan Ash  
AstraZeneca Field Headquarters  
Miss Jillian Atwood  
Ms. Stacy Austin  
Aya Healthcare  
Ms. Amanda Bagarella  
Ms. Michele Baker  
Baker Newman Noyes  
Christiana Bakolas  
Stavroula Bakolas  
Deepa Balasubramanian  
Derek Ball  
Mrs. Donna Ball  
Ms. Deborah Balmer  
Ms. Sandra Bandurski  
Ms. Jennifer Banfield  
Bangor Savings Bank  
Bank of America Charitable Gift Fund  
Bank of America Corp  
BankProv  
Chelsea Bannon  
Mr. Peter Bannon  
Mr. Ryan Bannon  
Ms. Caitlin Bannon  
Mr. Brian Bardo  
Ms. Jada J. Barnes  
Ms. Shannon Barnett  
Mr. Robert Barnhart  
Celeste Barr  
Corey Barr  
Kalisa Barrett  
Ms. Andrea Barrett  
Ms. Paula Barros

Mr. Matthew Barter  
Bean Foundation  
Jodi Bearden  
Ms. Barbara Beauchemin  
Ms. Connie Beaudoin  
Valerie Beaudrault  
Ms. Elise Beauregard  
Bedford Commons OB-GYN, P.A.  
Ms. Robin Beeley  
Deanna Belanger  
Mr. David Bellman  
Bellman Jewelers  
Bellwether Community Credit Union  
Dasia Benoit  
Alice Bentley  
Jackie Berger  
Sherry Bergeron  
Valerie Berman  
Henry F. Berry Charitable Trust  
Mr. & Mrs. Jim Berry  
Nick Berry  
Ms. Tracy Berthiaume  
Ms. Briana Bianchi  
Ms. Samantha Biffle  
Ms. Sharon Billingsley  
Ms. Moriah Billups  
Helen Biron  
Mr. Michael Biron  
John Bissonnette, MD  
Stephanie Blackall  
Ms. Courtney Blaikie  
Ms. Jane C. Blais  
Ms. Kriss S. Blevens  
Ms. Brenda Blonigen  
Ms. Brooke Bograd  
BOND  
Mr. & Mrs. Scott Bond  
Ms. Ashlie Bonneville  
Roberta Borruso  
Jean Bossanelli  
Amanda Bouchard  
Barbara Boucher  
Christina Boucher  
Corey Boucher  
Mr. Ray Boudreau  
Mrs. Adele Bouffard-Baker  
Ms. Patricia Boulle  
Ms. Katie Bouton  
Mr. Alanson G. Bowen, Jr.  
Susan Boyd  
Ms. Maria Boylan  
Ms. Nicole Boyle  
Lisa Boyon  
Dr. Loretta Brady & Mr. Brian Brady  
Mrs. Linda Branscum  
Ms. Cecile Brasley  
Ms. Christine Brassard  
Casey Breen  
Mr. & Mrs. David Breen  
Ryan Bresnahan  
Ms. Xernette Bridges  
Ms. Daniella Brien  
Mr. Ryan Broderick  
Lisa Brodeur  
Ms. Patricia Brough  
John Brown  
Solana Brown  
Kathleen Brunette

Mr. John Buckley III  
Mr. Pavankumar Bukkapatnam  
Christina Burchill  
Louisa Burdette  
Ms. Debra Burgess  
Ms. Kristin Burke  
Nicole Burnett  
Mr. Ryan Burnor  
Ms. Stephanie Burnor  
Ms. Kathleen Burpee  
Mrs. June Butka  
Nora Buttrick  
Mr. Patrick Cahill  
Devan Caikauskas  
Ms. Lisa Callahan  
Citlaly Calvillo  
Kaitlyn Cann  
Kristin Canterbury  
Chris Carey  
Ms. Mary Carlin  
Ms. Joan E. Carrigan  
Mary Jane Casavant  
Nina Casaverde, DMD  
Ms. Alysia Cassotis  
Jeanmarie Cataldo-Carozza  
Lisa Catania  
Ms. Shaylin Cesar  
CGI Business Solutions  
Mr. Steve Chafin  
Ms. Laura Chalifour  
Change Foundation  
Ms. Tracy Charette  
Charles Schwab  
Ms. Maureen Charter  
Ms. Amanda Chase  
Tami Chase  
Mr. Michael J. Chen  
Tzu Fang Chen  
Meaghan Chesnulevich  
Ms. Diane Chicoine  
Chill Cares, Inc.  
Michelle Choate  
Chris Nelson Contracting  
Gordon Churchill  
Vanessa Churchill  
Citizens Bank  
Mr. Joe Civiello  
Ms. Brianna Clark  
Ms. Samantha Clark  
Ms. Sharon Clohesy  
Coca-Cola Beverages Northeast  
Mr. David Cochran  
& Mrs. Ellie Cochran  
Ms. Kristin Coelho  
Kristine Colburn  
Mr. Kevin Colburn  
Michelle Collins  
Kerin Coltin  
Ms. Karen Condylis  
Janet A. Connor  
Ms. Robin Conserva  
Mark Conway  
Ms. Lisa Cornellier  
Ms. Deborah Corrigan

# Community Support

Keely Coruth  
Mr. Joe Costanzo  
Ms. Lisa Cottone  
John Country  
Ms. Kathryn Covey  
Ms. Maryjo Covey  
Ms. Kate Cox  
Ms. Meghan Coyle  
Ms. Karen Crain  
Kelly Craioveanu  
Ms. Liz Craioveanu  
Ms. Charlene Crehan  
Mr. Forest Crigler  
Dan Cronin  
Mr. & Mrs. Michael Croteau  
Ms. Amy Croteau  
Ms. Madison Croteau  
Sarah Croteau  
Ms. Meghan Croto  
CR's The Restaurant  
Sheila Cullinane  
Ms. Barbara A. Cunningham  
Ms. Clare Curran-Ball  
Emily Curry  
Mr. Joseph Curti  
& Mrs. Amelia Curti  
Mr. David J. Cuzzi  
& Mrs. Christina M. Cuzzi  
Ms. Margaret Czellecz  
Dahlquist Trust Fund  
Mr. Jason Dailey  
Nicholas D'Ambrose  
Ms. Kathleen D'Amico  
Mr. & Ms. James Danis  
Mr. Steve DaSilva  
Ms. Sandy Dawes  
Marabeth DeAngelis  
Bill DeCarolis  
Ms. Kelly DeJulio  
Ms. Ann M. Delaney  
Frank Demaria  
Barbara DeMinico  
Mr. Robert Deneau  
Ms. Deborah Deneau  
Ashley Dennis  
Scott DeNobile  
Mariah Derby  
Derry Technological Services, Inc.  
Laurie Desgroseilliers  
Darlene Desmarais  
Jackson DeStefano  
Mr. David DeVillers  
Ms. Michelle DeVillers  
Jaime Devine  
JoAnne Dexter  
Ms. Samantha Diaz  
Mr. Gary Dibona  
Mr. & Attorney Robert Dietel  
Digital Insurance, LLC  
Mr. James DiPietro  
Regina Dixon  
Ms. Jo-Anne Dombrowskas  
Ms. Darlene Donovan  
Ms. Eileen Doran  
Ms. Claire E. Dorval  
Mr. Phillip Doten  
Doug and Genie Dean  
Mr. David Downey  
Ms. Angie Doyle

Don Dragon  
Ms. Carol Dragon  
Ms. Jennifer Drover  
Debra Dubisz  
Ms. Kassie Dubois  
Ms. Lisa Duda  
Sabrina Duffy  
Mr. Matthew J. Duffy  
& Mrs. Jenelle W. Duffy  
Ms. Michelle Duguay  
Ashley Dumas  
Ms. Irene Dumas-Maurier  
Ms. Megan Dumont  
Kelly Dunlop  
Mr. Robert Dupuis  
Lisa Duquette  
Ms. Sharon D'Urso  
Mr. Andy Dutton  
Mr. Scott Dutton  
Sara Dutton-LaPointe  
Mr. & Mrs. & Mrs. Douglas Duval  
Mr. & Mrs. Douglas Duval  
Ms. Linda Dwyer  
e4h Environments for Health  
Architecture  
Eastern Bank Charitable Foundation  
EchoStor Technologies, Inc.  
Eckman Construction Company, Inc.  
Edward Jones Investment Services  
Mr. & Mrs. Justin Eldridge  
Mr. Stephen F. Eldridge  
Eldridge Investment Advisors  
Elevance Health, Inc.  
Elliot Breast Health Center  
Elliot Hospital Associates  
Jamie Elliott  
Ms. Martha Elliott  
Mrs. & Mr. Eileen Elliott  
Katherine Emala  
Empower Retirement  
Endless Solutions, LLC DBA Griffin  
Forensic Accounting  
Dr. Luis S. Englander  
& Mrs. Pamela Anne Englander  
Ensemble Health Care  
Ms. Kathleen Erkkila  
Ms. Christine Estes  
Dr. Jack T. Evjy & Mrs. Sheila A. Evjy  
Mina Farahani  
Federal Carpet and Flooring  
Mr. Thomas W. Feller  
Suzanne Ferland  
Ms. Vicki Fiferina  
Claudette Fillion  
Corey Fillion  
Ms. Sharon Finn  
FinThrive  
Mr. Matthew Fitzgerald  
Mr. Martin J. Fitzpatrick  
Five North Realty Group Inc.  
Mrs. Karen Flecchia  
& Mr. Edward Flecchia, Jr.  
Ms. Ali Fleury  
Mr. Chris Fogg  
Alex Follett  
Marti Folopoulos  
Katie Fontana  
Ms. Louise G. Forseze  
Mr. Lawrence Fortin

Ms. Mary Foshier  
Ms. Laura Foti  
Ms. Heidi Fraser  
Ms. Catherine Freeman  
Robert A. Fremeau, DMD  
& Mrs. Gail Fremeau  
Melissa French  
Richard B. Friedman, M.D.  
Ms. Karissa Frost  
Vanisha Galindez  
Mr. & Mrs. Thomas Gallagher  
Mike Garcia  
Ms. Cheryl Garrison  
Mr. Richard Gaston  
Mr. Jeffrey Gaulin  
Ms. Sarah Gaulin  
Geiger  
Gem Beauty  
Carol Gendron  
Natalie Gendron  
Ms. Shelley A. George  
Ms. Colleen Geraghty  
Ms. Ann Marie Giacalone  
Ms. LouAnne Giangreco  
Ms. Deborah Gibbs  
Gilead Sciences  
Kimberly Gillingham  
Jane Giusti  
Mr. Rob Glew & Mrs. Karen Glew  
Ms. Meredith Goertel  
Michelle Goodnow  
Mr. Brendan Goodwin  
Mr. Charles S. Goodwin  
& Mrs. Jaye Goodwin  
Abirami Gopinath  
Michael Gorkin  
Hazel Gott  
Mr. John Grady  
Ms. Marilyn Graham  
Ms. Jessica Grande  
Granite State Plumbing & Heating, LLC  
Mr. Cary Grant  
Ms. Deb Grant  
Ms. Cynthia A. Gray  
Ms. Elizabeth Gray  
Ms. Jennifer Gray  
Ms. Cassidy Gray  
Mrs. Jeanne D. Gregoire  
Ms. Korean Grieco  
Mr. Joe Griffin  
Mr. Ryan F. Griffin & Mrs. Elise Griffin  
Mrs. & Mr. Elise Griffin  
Mrs. Pat Griffin  
Ms. Alicia Griffin  
Mr. Michael Grimard  
Ms. Sheila Grimes  
Group 1 Automotive  
Ms. Michele Guilfoil  
Ms. Jacklyn Guill  
Ms. Christina Haag, ARNP  
Mr. Kevin Haggerty  
& Mrs. Lisa Haggerty  
Haggerty's Cleaning Service, Inc.  
Mrs. Susan Hagopian  
Mr. Mark J. Hagopian  
& Mrs. Susan Hagopian  
Tyler Hagstrom

# Community Support

Ms. Karen Hall  
Ms. Zoe Hamilton  
Hampshire Fire Protection Co., LLC  
Lara Hanlon, MD  
Ms. Leigh-Ann Hanlon  
Joanna Hansen  
Adore Hardacre  
John Harding  
Melissa Hardy  
Ms. Kerri Hardy  
Ms. Susanna Hargreaves  
Mike Harrison  
Ms. Natalie Harrison  
Bethany Hart, DO  
Ms. Julie Hart  
Ms. Pamela Harvey  
Ms. Erin Haskell  
Ms. Susan P. Hatch  
Nick Hathaway  
Mr. Todd Hathaway  
Sarah Hayes  
Mr. Sean Hearn  
Ms. Jane Hearn  
Hearst  
Mr. Al Heavey  
Ms. Kerri Hebb  
John Heffernan  
Ms. Audrey J. Heller  
Lorna Hemsley  
Nicole Henry  
Delfia M. Hermenegildo  
LoriAnn Herrmann  
Mrs. Lucia Herrmann  
Mr. Robert Herrmann  
Ms. Holly Hersee  
Mr. Brian Hettrick  
Ms. Carol Hetzel  
Ms. Samantha Hetzel  
Pam Hicks  
Mr. Carl Higginson  
Russell Hilbert  
Ms. Jane Hilder  
Marie Hills  
Hillsbrook Village  
Pi jean Ho  
Ms. Sara Janes Hoag  
Dr. Paul W. Hoff  
& Mrs. Selma Naccach-Hoff  
Mr. Alan Hoffman  
Attorney James C. Hood  
& Mrs. Elise Hood  
Ms. Christina Horan  
Ms. Dawn Horan  
Ms. Holly Horst  
Ms. Denise Hudon  
Ms. Jenna Hudson  
Ms. Kristy Hughes  
Mr. Preston Hunter  
Ms. Jennifer Huston  
Mrs. Sabine Hynds  
Ms. Amela Imamovic  
Interstate Electrical Services Corp.  
Ms. Katie Intorcio  
IQVIA Inc.  
Ira Subaru of Manchester  
Jacob and Friends Charity  
Marlene Jacobs  
Mr. Keith Janca & Mrs. Kirsten Janca  
Mr. Edward Jaworski  
Mr. George Jaworski  
Mrs. Joanne Jeannette  
& Mr. David Jeannette  
Mr. Jack Jenkins

Ms. Doris Jenkins  
Mrs. Amy Jenkins  
Ms. Audrey Jensen  
Ms. Alexis Jones  
Katie Jordan  
Michelle Joyce  
Barbara Jussif  
Ms. Julie Jussif  
Ms. Stephanie Kalipolites  
Dr. Emese Kalnoki-Kis  
Ms. Melissa Kampersal  
Theohare Kapellakis  
Mr. Rick Kardos  
Judith Kaufman  
Ms. Liza Keach  
Aimee Kearage  
Leandra Kelley  
Ms. Arissa Kelley  
Dottie & William Kelley  
Ms. Rebecca Kelliher  
Mr. & Mrs. David J. Kelso  
Ms. Katelyn Kendall  
Ms. Elizabeth Kensicki  
Mr. James Kerr  
Ms. Anna Kerr  
Mr. & Ms. Brian Kiefer  
Ms. Doreen Kienia  
Ms. Hanna Kienia  
Jared King  
Valerie King  
Ms. Maria Kirsch  
Ms. Linda Kliczewski  
Hillary Klutsch Zona  
Brian Knab, MD & Mrs. Allison Knab  
Mr. & Mrs. Samuel B. Knowles, Jr.  
Ms. Katie Koehler  
Ishani Kohli  
Ms. Christine Kokkinos  
Mr. & Ms. Paul Koza  
Krantz Family Nursing Scholarship Fund  
Ms. Cindy Kring  
Diana Krusell  
Mr. & Mrs. Timothy Kubat  
Ms. Cheryl A. Kula  
Marguerite Labarre  
LaBelle Winery  
Ms. Linda Labranche  
Mr. Keith Lacasse  
Roger Lace  
Ms. Meaghan Lacerte  
Ms. Samantha LaCombe  
Ms. Louise Lacroix  
Dick LaFlamme  
Pam LaFlamme  
Ms. Cindy Lafond  
Mr. James LaFreniere  
Jean Lagasse  
Mr. & Mrs. Stephen Lagerquist  
Mrs. Dallas A. Lagerquist  
Ms. Lindsey Laliberte  
Ms. Michelle Lambert  
Max Lane  
Tricia Lane  
Ms. Hilary Laquerre  
Mr. & Mrs. Steven F. Larkin  
Michael LaRochelle  
Tanya Larsen-Bollenbach  
Ms. Linda Lassonde, ARNP  
Andie Latham  
Leah Latham  
Ms. Cynthia Latham  
Derek Lavallee  
Lori Laventure

Ms. Meghan Lawton  
Ms. Susan Leaver  
Courtney LeBlanc  
Mr. Brian Leborgne  
Dr. Marc F. Leclair  
& Mrs. Maryann Leclair  
Ms. Heather Ledoux  
Mr. Michael Lee  
Keira Lemay  
Ms. Paula Lemay  
Ms. Karen Lepine  
Mr. Michael Leppert  
Ms. Ivy B. Levine  
Dr. Chelsey Lewis & Dr. David Lewis  
Ms. Ivy Li  
Ms. Deborah Lidster  
Maureen Lillis  
Lincoln Financial Foundation  
Dianna Lindholm  
Deborah Lindley  
Donna Lindsey  
Ms. Sarah Linkov  
Mrs. Ann M. Little  
Ms. Kaitlyn Llewellyn  
Locke's Promise, Inc.  
Mrs. Amanda Lockhead  
LogixHealth  
Ms. Rona Logue  
Judy Longhi  
Larry Longo  
Ms. Maria Lopes-Murin  
Ms. Linda LoPizzo  
Julie Lord  
Mrs. Megan J. Lozeau  
Ms. Colleen Lozeau  
Ms. Monique Lueras  
Dr. & Mrs. Neal Luther  
Ms. Karen Lutz  
Mr. John Lyscars  
M&T Bank  
Ms. Jocelyn MacDonald  
Kyle Macey, DO  
Laura Macfarlane  
Ms. Kate MacKenzie  
Glennis Mackey  
Ms. Angelica Mackey  
Jennifer MacLaren  
Mr. Ignatius MacLellan  
Heather MacLeod  
Mr. Andrew MacWilliam  
Dat Mai  
Mr. James Major  
Ms. Allison Mallo  
Ms. Christine Malloy  
Ms. Kate Malloy  
Manchester Kiwanis Children's Fund, Inc.  
Manchester OB/GYN Associates  
Mr. & Mrs. Charles R. Manning  
Mr. & Mrs. Francis E. Manning  
Mr. & Mrs. Thomas F. Manning  
Patricia Mansur-Mosson  
Marcam Associates  
Christine Marquis  
Xitlali Marroquin  
Ms. Eva L. Martel  
Ms. Wendy Martineau  
Mrs. Paula Mason  
Massachusetts Mutual Life  
Insurance Company  
John Matera  
Mary E. Maynard

# Community Support

Ms. Nancy Maynard  
Ms. Sandy Maynard  
Sandy McAndrews  
Gregory McCarthy, MD  
Joe McCarthy  
Mr. David Mccartin  
Sandra Mccartin  
Heather McClay  
Ms. Jennifer McCormack  
Cathy McCoy  
Mr. Michael J. McFadden  
& Mrs. Susan McFadden  
Mr. Peter McGee  
Ms. Elizabeth McGovern  
Ms. Mikayla McGowan  
Heather McGrail  
Mrs. Patricia McGregor  
Deborah McKay  
Cheryl McKenney  
McLane Middleton  
Stacey McLean  
Mr. Gerald McMahan  
Kevin McMahan  
Ms. Lyn McMillan  
Mrs. Cindy L. McNally  
Mr. Brian J. McNally  
& Mrs. Cindy L. McNally  
Ms. Heather McQuade  
Mr. Arthur Meconi  
& Mrs. Jennifer Meconi  
Shilpi Mehrotra  
Heidi Mainz, MD  
Mr. Brent Melanson  
Ms. Julie Melia  
Ms. Michelle Melius  
Ms. Caroline Melley  
Ms. Maryanne Melley  
Ms. Meaghan Melley  
Ms. Kristina Melley  
MEMIC  
Megan Mercier  
Rhonda Mercier  
Philip Messing  
Ms. Sarah Metting  
Mr. Bill Meyer  
Mr. & Mrs. Jay Michaud  
Microsoft  
Mr. David Migneault  
Millennium Running, L.L.C.  
Ms. Maureen Milliken  
Mr. Connor Minch  
Mr. Zachary Minch  
Kayla Minervini  
Giovanna Mirasolo  
Mr. Brian Mooney  
Ms. Pamela Moore  
Ms. Paula Moore  
Mrs. Linda Moquin  
Ms. Maria Morais  
Branden Morin  
Cheryl Morin  
George Morin  
Mr. Michael R. Morin  
Mike Morris  
Ms. Crystal Morris  
Ms. Barbara Morrison  
Ms. Hannah Morrison  
Jackie Morse  
Ms. Missy Motew  
Megan Moulton  
Ms. Tricia Murray  
Mr. Brett Murray  
Myriad Genetics, Inc.

Shiba Nair  
Ms. Christine Najjar  
Ms. Anne Naugler  
Mrs. Karen Nault  
Ms. Dee Nayyar  
Mr. Benjamin Nelson  
Mr. Keith Nelson  
New Hampshire Prostate Cancer  
Coalition  
New Hampshire Ski Club  
New York Life Insurance Company  
NH Academie of Dance, LLC  
NH Housing Authority  
Ms. Amy Nieman  
Nixon Peabody L.L.P.  
Northeast Athletic & Trophy Company  
Northeast Delta Dental  
Northeast Rehabilitation Hospital  
Network  
Northwest Elementary School  
Mrs. Helen Norton  
Novartis Pharmaceuticals Corporation  
Ms. Addison Nozell  
Ms. Erica Nunan  
Brendan OBrien  
Mr. Eilis O'Brien  
Donna O'Connell  
Mr. Gary O'Connell  
Mr. Peter O'Connell  
Mrs. Maggie O'Connell  
Olenchak Enterprises  
Brant Oliver  
Oliver Mechanical, Inc.  
One Digital  
Mr. Joseph Oriani & Mrs. Melissa Oriani  
Tammy O'Rourke  
Alex Ortiz  
Ms. Nichole O'Shaughnessy  
Amanda Ouellette  
Ms. Elizabeth Palmer  
Nicole Palucci  
Penny Papastathis  
Ms. Emma Paquette  
Ankur Parashar  
Ms. Juliann Parent  
Kelly Parker  
Mattie and David Paul Charitable Fund  
Mr. Samuel Paul  
Ms. Carrie Peabody  
Mr. & Mrs. Kenneth A. Pearson  
Mrs. Marilyn Pelletier  
Ms. Donna Pelletier  
Ms. Martha Perich  
Ms. Emily Perry  
Ms. Cecelia Peterson  
Daniel Petley  
Mr. David Phillips & Mrs. Christine Phillips  
Ms. Melissa Phillips  
Pinnacle Mortgage Corp.  
Scott Pippin  
Mr. John J. Piscioniere  
Ms. Jennifer Pitre  
Ms. Rachel Poltak  
Ms. Stephanie Pomeroy  
Gomathi Ponnuelu  
Ms. Suzanne E. Potoma  
Kyle Poulin  
Mr. Keith Poulin  
Ms. Deborah Poulin  
Mr. Jacob Pouliot  
Ms. Dee Pouliot  
Ms. Christine Pratte  
Mr. Robert Preece

Mr. Donald E. Prescott  
Mr. & Mrs. Glen Primeau  
Elizabeth Prindiville  
Ashley Prokopik  
Purple Finch Events, LLC  
Debra Quimby  
Bill Quindley  
Brian Quinn  
Ms. Lara Quiroga  
Radiation Oncology Associates, P.A.  
Mr. Thomas Raffio  
Katelyn Ranfos  
Dick & Marsha Rawlings  
Kate Raymond  
Mr. Michael Raymond  
Nancy Rayne  
Mr. Kevin Reardon  
Sutthirat Reichard  
Mr. Matt Reilly  
Remix Skate and Event Center, LLC  
Reos Sales & Service, LLC  
Casey Richards  
Ms. Adele J. Rittmueller  
RiverStone Resources LLC  
Mr. & Mrs. Armando J. Roberto, Jr.  
Chelsea Roberts  
Chris Roberts  
Mrs. Alyssa Robie  
Casey Robinson  
Ms. Elizabeth Robinson  
Rock the Cup, LLC  
Rockland Trust  
Ms. Joucelyn Rodriguez  
Mr. Chuck Rolecek  
& Ms. Kristy Blundell  
Ms. Judith P. Ronshagen  
Mr. & Mrs. Danny Rosario  
Mr. Robert Rose  
David M. Rostollan  
Kim A. Rouleau  
Mr. Tom Rousseau  
Mrs. Michelle Rousseau  
Patricia Roy  
Samantha Roy  
Mr. Keith Rubin  
Mr. Arthur E. Rugg  
Kay Ruma  
Ms. Leandra Rumfelt  
Ms. Adrienne Rupp  
Mr. Wes Russell  
Mr. Sean Ryan  
Ms. Amanda Saaid  
Mrs. Anna Sabato  
Valerie Sambataro  
Nancy Sands  
Emina Sandzic Cocalic  
Braeden Sanford  
Nicholas Santaniello  
Mrs. Maryellen Sardella  
David Sargent  
David Sassak  
Ms. Stacey Sawtelle  
Mr. Terrance Scanlan  
Mr. & Mrs. Robert Schroeder  
Ms. Bobbi Schwartz  
& Mr. Marc Saltzman  
Ms. Dot Secor  
SEI Private Trust Company  
Rob Shaker  
Ms. Mary Shea  
Mr. Michael Sheehan  
Shields Health Management  
Company, LLC

# Community Support

Ashley Silkman  
Scott Silkman  
Mr. Thomas Silva  
& Mrs. Kimberley Silva  
Dawn Silvia  
Mr. Robert Singer  
Sally Sites  
Dr. Dane Slentz  
Mrs. Susan M. Sloane  
Amy Smith  
Mrs. Nicole Smith  
Mr. & Mrs. Elliot J. Smith  
Sherrie Snell  
Ms. Kelly Snow  
Ms. Laura Socha  
Grace S. Solinsky  
Mr. Kenneth S. Solinsky  
& Mrs. Grace S. Solinsky  
Mr. Travis Soterion  
Robin Sousa  
Southern New Hampshire Radiology  
Consultants, P.C.  
Mr. Peter Spain  
Mrs. Mary Ellen Spain  
Ms. Patricia Speltz  
Ms. Lori Spence  
Sarah Spencer  
Cynthia Speropolous  
Gerald Spindel  
Spindel Eye Associates  
Rob Sprague  
Sprague Operating Resources  
Mr. Paul St. Cyr  
Linda St. Laurent  
St. Mary's Bank  
Mr. & Mrs. Ken St. Onge  
Ms. Donna St. Pierre  
Shannon St. Onge  
Kara Stasko  
Ms. Sally Steeves  
Mr. Andrew Sterling  
Dawn Stickney  
Ms. Carol Stone  
Mr. William Stotter  
Mrs. Hollie Strandson  
Mr. Kurt Strandson  
& Mrs. Hollie Strandson  
Mr. Kurt Strohmeier  
Angie Sullivan  
Diane Sullivan  
Mr. & Mrs. Michael Sullivan  
Mr. Arthur Sullivan  
Ms. Amy-Lynn Sullivan  
Ms. Carolyn Sullivan  
Ms. Kathleen S. Sullivan  
Mr. Tom Sullivan, Jr.  
Mr. Arthur Surprenant  
Ms. Jade Surette  
Babka Susan

Ms. Elizabeth Sweeney  
Mr. & Mrs. Edward Swider  
Mrs. Melanie Szopa  
Mr. Matthew Szyszkiewicz  
M. Tagalakis  
Taj Engineering, LLC  
Takeda Pharmaceuticals  
Mr. Michael Tardiff  
Jonathan Tavares  
Ms. Jill Teeters & Mr. David Lamothe  
Alitza Teixeira  
Mr. Judith Temple  
The Tenn Family  
Tenn And Tenn, P.A.  
Elizabeth Tentas  
Peter Tentas  
Ms. Amy Tetreault  
Mr. Emile J. Tetu  
& Mrs. Suzanne M. Tetu  
Ms. Megan Thayer  
The Baldwin  
The Botnick Family Foundation  
The M&T Charitable Foundation  
The Seth Rosenthal and Joi Barrett  
Charitable Fund  
Sam K. Theodosopoulos  
Ms. Helene Thibodeau  
Ms. Meredith Thomas  
Ms. Sydney Thompson  
Thrivent  
Nina Thrower  
Ms. Shannon Tiffany  
Sochetta Tim  
Mr. Rudra Timsina & Mrs. Myra Timsina  
Evanivaldc Tinajero  
Frida Tinajero  
Lizeth Tinajero  
Vasilike Tolios  
Nicholas Tortoriello  
Dr. Donald Tower  
Winona Towle  
Ms. Laura Trainor  
Travelers  
TreMonte Pizzeria and Ale House  
Ms. Angeliq Trent  
Triangle Credit Union  
Mr. & Mrs. Roger Trudel  
Denise True  
Mr. Harold Turner, Jr.  
& Mrs. Laura Turner  
Ms. Mariane Tyburski  
Ms. Sarah Tyburski  
UHG  
Unitil  
Ms. Pamela Urban-Morin  
Ms. Michelle Valenti  
Mrs. Karen A. Van Der Beken  
& Mr. David P. Van Der Beken  
Priyadarshini Velayudam

Ramya Velmurugan  
Louise Vernadakis  
Mr. Adam Vernadakis  
Mr. Kevin Vigneault  
Ms. Jennifer Villarante  
Johanna Vloeberghs  
Mr. Donald J. Wadas  
Ms. Gretchen Wade  
Wadleigh, Starr & Peters, P.L.L.C.  
Ms. Kathleen Wagner  
Jennifer Wakeman  
Mr. Ian Wallin  
Mr. Matt Walsh  
Mr. Michael Walsh  
Ms. Jessica Ward  
Frank O. Warren, Jr., M.D. Chapel  
Fund  
Shawn Warren  
Mr. Paul T. Weathers  
Douglas J. Weckstein, MD  
& Mrs. Tara T. Weckstein  
Janet Weigel  
Victor Weisenbloom  
Lauren Weldon  
Ms. Paula Wellde  
Jessica Weller  
Mr. & Mrs. David G. Wenger  
Mr. David Wenger  
Ms. Laurie Wilcoxon  
Caleb Wilder  
Susanna S. Wilkens, MD  
Ms. Allison Wilkey  
Ms. Autumn Wilkins  
Ashley Williams  
Kathy Williams  
Mr. Dean Williams  
Ms. Cheryl Willnus  
Ms. Margaret Wilmott  
Hollis Wilson  
Ms. Stephanie Wilson  
Winbrook  
Mr. Joshua Winn  
Mrs. Maryse Wirbal  
Scott Wisniewski  
Ms. Jenna Wolf  
Anne Wolfe  
Terri Wood  
Darrell Wozniak  
Ms. Abby Yerrington  
Alexandra Yogas  
Tad Zedon  
Mrs. Lynn Zimmerman  
& Mr. Brian Zimmerman  
Ms. Tanya Zinck  
Haidy Zioze  
Mr. Charles Zoeller  
Ms. Anna Zoltko

# Employee Giving

Employee giving has been a strong and critical part of advancing philanthropy at The Elliot for decades. Thank you to these caregivers and staff for their kind support!

Ms. Jamaica Felichi Agbisit  
Uri Ahn, MD  
Ms. Dominique Allard  
Ms. Samantha Almeida  
Jaime Altabet, MD  
Ms. Juanita Alvarado  
Ms. Karen Amaro  
Ms. Michelle Andrade  
Mrs. Cynthia Andrikowich  
Ms. Chandra Anguiano  
Anonymous (20)  
Ms. Shannon Argo  
Ms. Kirsten Arnold  
Ms. Patricia Autenrieth  
Alexa Azbell-Bertrand  
Ms. Jennifer Babicz  
Ms. Hannah Baldwin  
Ms. Noella D. Banks  
Mrs. Carol J. Barrett  
Maura Bartlett  
Mrs. Michelle Barzaga  
Ms. Teresa Bastek  
Greg Baxter, MD  
Mr. Henry Beaudry  
Ms. Nicola Beauregard  
Ms. Laurie Benjamin  
Ms. Lisa A. Berger  
Ms. Lynda Bernier  
Ms. Aimee Berry  
Ms. Theresa Bianchi  
Mark Bilech, MD  
Ms. Sharon Blackwell  
Ms. Sarah Blaikie  
Ms. Mary Blevens  
Ms. Kristy Blundell  
Ms. Danielle Boisvert  
Ms. Lisa Bonneau  
Amparo Bouchard  
Ms. Jill Bowden  
Ms. Teisha Boyce  
Christopher Brauer, MD  
Rev. Barbara Brauwley  
Ms. Amy Brennan  
Ms. Catherine Brennan  
Ms. Rebekah Briggs  
Ms. Kathleen Brown  
Charlotte Brown-Zalewa  
Ms. Melissa Brule  
Ms. Alison R. Bubar  
Malgorzata D. Bulanowski, MD  
Dr. Todd Burdette  
Ms. Katherine Burns  
Ms. Lois Burrige  
Mrs. Heidi N. Buxton  
Ann Cabot, D.O.  
Ms. Lara Carney  
Ms. Laura Chandler  
Mr. Richard G. Charbonneau  
Mrs. Rachel M. Chase  
Manish Chopra, MD  
Ms. Heather Clark  
Ms. Marsha Clements  
Ms. Bridget Cleveland  
Ms. Marcia A. Cloutier  
Ms. Sarah Cochran  
Ms. Cynthia Cohen  
Ms. Dianne Collins  
Mrs. Gail F. Columb  
Mrs. Jessica Connare  
Mrs. Karen A. Cookson  
Ms. Cheryl Corey  
Mr. Stephen Cornish  
Mrs. Tracey L. Croteau  
Ms. Lynn Cummings  
Ms. Kathleen Curit

Ms. Meredith Curley  
Mrs. Linda M. Currier  
Ms. Reagan Daniels  
Ms. Alice Demos  
Ms. Fun Desmond  
Kevin Desrosiers, MD  
Mrs. Holly L. Desrosiers  
Attorney Clara Dietel  
Ms. Ana B. Dionne  
Mrs. Karina Dobe  
Ms. Martha Dodge  
Kathleen M. Doherty, MD  
Ms. Laura L. Dolan-Rommell  
Ms. Jennifer Dolloff  
Ms. Anna Donoghue  
Ms. Whitney E. Dore  
Ms. Emily Dowling  
Lisa Doyle, MD  
Mrs. Michelle J. Drewniak  
Ms. Michelle Drolette  
Ms. Amy Dubois  
Ms. Maureen Duda  
Ms. Rebecca Dutton  
Ms. Lisa Beth Elliott  
Mr. Jason Elliott  
Ms. Jana Emeny  
Ms. Tatum Fahs  
Ms. Alisha Feightner  
Marina Feldman, MD  
Mrs. Barbara B. Feloney  
Carl M. Fier, MD  
Ms. Jennifer Finn  
Ms. Kathryn A. Fitzgerald  
Ms. Tanya Flagg  
Ms. Dawn M. Fortin  
Mr. Steven Foster  
Ms. Catherine Frasco  
Mr. Brian M. Frechette  
Ms. Anne Frechette  
Mrs. Lorraine Gallagher  
Ms. Annette Gervais  
Mrs. Catherine A. Gilbert  
Ms. Kristen Glennon  
Ms. Adna Glusac  
Ms. Punitha Gopalan  
Mrs. Cynthia Graham  
Mrs. Sabrina Graichen  
Mr. Darrell M. Grande  
Ms. Keri Grande  
Ms. Amber Guilbeault  
Ms. Beth Gutoff  
Mrs. Anne-Marie Hafeman  
Mr. Kevin Hafeman  
Ms. Brandi-Ann Hall  
Ms. Katie Hall  
Ms. Norma Harding  
Ms. Kathryn Hartford  
Ms. Casey Hill  
Ms. Cheryl Hobbs  
Dr. Jean Hostage  
Mr. Timothy J. Howe  
Mr. Alastair Howie  
Ms. Kristen Hunt  
Nancy Husarik, MD  
Ms. Jocelyn Hutchinson  
Ms. Elizabeth Innie  
Ms. Kristine Irwin  
Ms. Denise Jeffery  
Ms. Melissa S. Johnson  
Ms. Darlene Johnson  
Ms. Pamela Joplin  
Ms. Kristen Jordan  
Ms. Julie Josey  
Ms. Sonia Joslin  
Ms. Carole N. Jutras

Ms. Dianne Kashiwabara  
Ms. Nicole Kasynak  
Ms. Tammy Kelly  
Ms. Margaret A. Kennedy  
Ms. Lois Kesty  
Ms. Felicia Kiefer  
Ms. Kerry D. King  
John L. Klunk, MD  
Ms. Sharon Kostansek  
Ms. Krystle Kowanick  
Dr. Johnny Kuttab  
Ms. Tina Lambert  
Ms. Marilyn Lattinville  
Mr. John Leary  
Mr. Donald Leblond  
Marc F. Leclair, MD  
Mrs. Andrea Lee  
Ms. Chantal LeFrancois  
Ms. Jocelyn M. Lepine  
Mr. Daniel Levesque  
Ms. Kimberly Liguori  
Ms. Donna Lithgow  
Mr. Christopher Lopez  
Ms. Mary E. Lord  
Ms. Kristi Lover  
Ms. Jennifer Lusk  
Mrs. Janet Maher-Cote  
Mrs. Heather Maier  
Ms. Stephanie Maloney  
Ms. Sheri Manti  
Ms. Rebecca G. Marden  
Ms. Lynda Martin-Heaney  
Ms. Gretchen Mathieu  
Ms. Sumitha Mathur  
Mr. John R. Matte  
Mr. William McCormick  
Ms. Kristy McEvoy  
Ms. Bethany Mechachonis  
Mr. Jay Michaud  
Holly Mintz, MD  
Meghna Misra, MD  
Crystal Mockler  
Ms. Colleen Moloney  
Mr. Kenneth Monty  
Ms. Karen Mooers  
Ms. Robin Morris  
Mrs. Claudette Morrison  
Ms. Molly Mortimer  
Ms. Felicia Morway  
Ms. Jessica Moya  
Ms. Laurie Mullen  
Ms. Clemence Nadeau  
Ms. Susan Nicholls  
Ms. Melissa Nickola  
Ms. Terry O'Brien  
Ms. Donna Ouellette  
Ms. Cheryl Outlaw  
Ms. Sarah Palmer  
Ms. Michelle Palucci  
Ms. Sheryl Paquin  
Ms. Freda Paris  
Ms. Lorraine Paris  
Ms. Elle Parsons  
Mrs. Kathy Perkins  
Ms. Krista Perreault  
Ms. Jennifer Pike  
Patricia Pinski  
Georgia Plamondon  
Scott R. Plourde  
Ms. Melissa Poltronieri  
Mrs. Beverly Primeau  
Lauren Priolo, MD  
Ms. Darlene Puchalski  
Curtis C. Quinn, MD  
Muhammed M. Qureshi, MD

Ms. Nicole Rae  
Ms. Kelli M. Rafferty  
Kevin Rankins, MD  
Eugene Raptis  
Ms. Katherine Redford, DO  
Ms. Karen Remillard  
Mr. Mark Rescino  
Mr. Peter Robichaud  
Ms. Fatima Rocco  
Ms. Flor Maria Rojas  
Ms. Kristine Rose  
Mrs. Jill Rourke  
Dr. Matt Ryzewski  
Ms. Muriel F. Saliba  
Gerald L. Sardella  
Mrs. Kelly Scargill  
Ms. Angela Schofield  
Ms. Lesley Sgro  
Ms. Hannah Sharp  
Ms. Rachel Shields  
Lana Shikhman, MD  
Dr. Khushbu Shukla  
Ms. Lisa Marie Sinotte  
Ms. Meagan L. Smart  
Mr. Bradford Smith  
Mr. Joseph Soldano  
Ms. Michelle Solis  
Ms. Elizabeth Spain  
Ms. Andrea Srebnik  
Mrs. Shannon St. Onge  
Ms. April M. Staiti  
Ms. Amanda Stanton  
Dr. Shawn W. Stapp  
Dr. Brenna Stapp  
Ms. Denice Stoll  
Donna Stone  
Ms. Heather Strong  
Ms. Erica Stupka-Fisk  
Mrs. Kathleen Sullivan  
Ms. Angela Sullivan  
Mrs. Genesis Sullivan  
Mrs. P. Meagan Tarrier  
Ms. Rande Tatham  
Halemariam Taye  
Ms. Susan Theodorou  
Michael Thomas, MD  
Mr. Joseph Tingley  
Ms. Emily Todd  
Ms. Meredith Trudel  
Ms. Jaclyn Truland  
Mr. Michael S. Turilli  
Ms. Amber Vallee  
Ms. Debra VanLaarhoven  
Ms. Karen Vaughan  
Ms. Jenna Vigars  
Ms. Sarah Vlasich  
Mrs. Karyn Vogt  
Mrs. JoAnn M. Walsh  
Ms. LoriAnn Walters  
Ms. Angela Watts  
Ms. Sandra Watts  
Ms. Priscilla Webler  
Ms. Sherry Webster  
Mr. Winslow E. Whitten  
Mr. Justin Wilkie  
Ms. Elizabeth Williams  
Ms. Tammie Willis  
Ms. Danielle Wilson  
Rachel Wise  
Ms. Linda Wojtkiewicz  
Ms. Renee C. Woodring  
Mrs. Christine H. Wright  
Chung-Mok Yoo, MD  
Emily A. Zajano, MD  
Tong Zhu, MD

## Elliot Health System

### **Elliot Hospital Board of Trustees & Elliot Health System Board of Directors 2025**

Elliot Health System is a nonprofit organization governed by a volunteer Board of Trustees, which helps to guide the direction of the hospital as a regional provider of healthcare services.

Greg Baxter, MD  
David Bellman  
Todd Burdette, MD  
David Cuzzi  
Joyia Fazelat, MD  
Marina Feldman, MD  
Carl Fier, MD  
Richard Fisher  
Robert Fremeau, DMD, Vice Chair  
John Friberg, Esquire  
Charles Goodwin  
James Hood, Esquire, Emeritus  
Linda Lassonde, APRN  
Andrew MacWilliam  
Eva Martel, Treasurer  
Selma Naccach-Hoff  
Robert Parisien, MD  
Eric Pound, MD  
Charles Rolecek  
Evan Smith, MD  
Philip Taub, Esquire  
James J. Tenn, Jr., Esquire, Board Chair  
Karen Van Der Beken, Secretary

## Mary & John Elliot Charitable Foundation Supporting The Elliot

### **Mary & John Elliot Charitable Foundation Board of Directors 2025**

David Bellman, Chair  
Charles S. Goodwin, Vice Chair  
Adrienne Rupp, Secretary  
Kristy Blundell, APRN  
Kelly Comeau  
Brian Frechete  
Jeff Guerette  
Mark Hagopian  
Keith Janca  
Shilpi Mehrotra  
Arthur Meconi  
Selma Naccach-Hoff  
Richard Rawlings  
Charles Rolecek  
Elliot Smith  
Kurt Strandson  
Thomas F. Sullivan Jr.  
James J. Tenn, Jr., Esquire

Elliot Staff, Elliot Hospital Associates  
Representatives & Young Professionals  
Representative

Kirsten Arnold  
Greg Baxter, MD  
Kaleena Gullede  
Priscilla Webler

---

# 2026 Save the dates

## Elliot Health System Garden Party

Thursday, May 7, 2026  
Manchester Country Club

## Elliot Health System Golf Classic

Thursday, June 4, 2026  
Passaconaway Country Club

## Elliot Health System Walk for Hope

Sunday, June 7, 2026  
SNHU Main Campus

## Delta Dental/Elliot Road Race

Thursday, August 6, 2026  
Veteran's Park

## Elliot Health System Gala

Friday, October 9, 2026  
DoubleTree Manchester

## Ways to Give

### ONLINE

Visit [elliorthospital.org/mjefoundation](https://elliorthospital.org/mjefoundation) to make a one-time or recurring gift.

### PHONE

Please call The Mary & John Elliot Charitable Foundation to make a gift by phone at 603-663-8934.

### PLANNED GIVING

Please call Kelli Rafferty at 603-663-3091 for more information about leaving The Elliot in your estate plans.

### MATCHING GIFTS

You may be able to increase your gift through a matching gift program offered by your employer.

### INSPIRED GIVING

Make a gift to honor an Elliot staff member, in memory of a loved one, or to celebrate an important milestone. Go to [donate.elliorthospital.org/inspiredgiving](https://donate.elliorthospital.org/inspiredgiving) to learn more.

## Contact



[elliorthospitalhealthsystem  
mjefoundation](https://elliorthospitalhealthsystem.org/mjefoundation)



[mje\\_foundation](https://www.instagram.com/mje_foundation)



[Mary & John Elliot Charitable Foundation](https://www.linkedin.com/company/Mary-John-Elliot-Charitable-Foundation)



603-663-8934



[elliorthospital.org/mjefoundation](https://elliorthospital.org/mjefoundation)



Mary & John Elliot Charitable  
Foundation  
Pine Tree Place  
360 Route 101, Unit 8  
Bedford, NH 03110



[foundation@elliort-hs.org](mailto:foundation@elliort-hs.org)



Mary  
& John  
Elliot  
Charitable Foundation

