

## Grateful Patient Family - The Griffins

At their six-week ultrasound appointment, Ryan and Elise Griffin from Rye discovered that Elise was pregnant with twins. Elise recalls, “It was such an awesome surprise, but little did we know what challenges come with multiples.”

Elise's water broke at thirty-three weeks while at the doctor's office, leading to an emergency situation and an early birth. “We had the conversation before I had given birth as to what our options were if the girls were to come early and had agreed that we would want to come to the Elliot. For us it was a great location and had heard that the Elliot NICU was wonderful.”

The Elliot offers the only Level III Neonatal Intensive Care Unit (NICU) in southern New Hampshire and is staffed with a team of specialized healthcare professionals dedicated to transporting critically ill newborns and infants to The Elliot for advanced care.

When The Elliot got the call about the Griffin babies, Hallie and Betsy, the transport team headed out to the seacoast to be there as soon as they were born. During Elise’s birth, The Elliot team provided immediate care and comfort despite the chaos and confusion, rearranging furniture to enable Elise, still under the effects of her spinal tap, to touch her newborns before they were brought to the Elliot.

Upon arrival at Elliott, a nurse practitioner confirmed the girls' safety, relieving Elise of her anxieties. “The Elliot team did a wonderful job making sure I knew what was going on every step of the way” says Elise.

Both girls spent five weeks in the neonatal intensive care unit (NICU). The Griffins were given regular updates and reassurances, ensuring they were a part of all conversations about their babies' medical plan.

Today Hallie and Betsy are happy and healthy one year olds. Grateful for the care they received, Ryan and Elise are committed to giving back to the NICU team and providing support to fund new post-partum chairs for new moms. They also recently shared their story at our Elliot Gala!

Scan here to watch  
the Griffins  
inspiring video



## We've moved!

The Mary & John Elliot Foundation has moved to:  
Pine Tree Place  
360 Route 101, Unit 8  
Bedford, NH 03110

**We look forward to welcoming you soon!**

**1st in New England.  
2nd in the nation.**



**100% dedicated to you.**

The Elliot has been officially verified as a Comprehensive Hospital by the American College of Surgeons Quality Verification Program (ACS QVP). We are now the only hospital in New England — and just the second in the country — to earn this highest-level designation for surgical quality and safety. This recognition validates our long-standing commitment to surgical excellence and collaborative work of providers and staff across departments.



## 2025 A Year of Impact

The Elliot Provided an outstanding year of care to our community

**30,399**

Chemotherapy & radiation oncology treatments provided

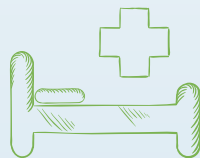


**23,080**

Mammograms performed

**39**

Wellness & support programs offered to patients at the Solinsky Center for Cancer Care at The Elliot.



**61,126**

Emergency Department visits

**15,985**

Admitted patients



**82,940**

Urgent care visits

**2,502**

Babies born



**131,308**

Physical & occupational rehabilitation treatments provided



To commemorate Breast Health Awareness during the month of October, Elliot Breast Health Center staff came together and organized an inspiring and fun bra decorating competition, Bras for A Cause! Over 60 uniquely decorated bras were submitted, raising nearly \$4,000 to benefit the Elliot Breast Health Center. The bras, which were displayed in the hall outside Breast Health, leading up to the final day of voting, highlighted the power of community support, creativity, and the importance of getting regular mammograms.

Congratulations to our winners and thank you to all who took the time to submit a bra and support this event!



# 2025 Event Recap

## Garden Party

On May 22, 2025 The Mary & John Elliot Charitable Foundation welcomed guests to the 8th Annual Garden Party at The Bedford Village Inn. The event raised over \$84,000 to support newborn and maternity care at The Elliot.



## Walk for Hope

Over 500 people joined us on June 8th, 2025 for the 7th Annual Walk for Hope at Southern New Hampshire University. Through participants' incredible fundraising efforts and with the generosity of our community sponsors, over \$50,000 was raised to support 39 patient programs at The Solinsky Center for Cancer Care at The Elliot. We were so lucky to have such wonderful weather to have our teams come together and walk to show our support for the community.



## Elliot Health System Golf Classic

The 26th Annual Elliot Golf Classic took place June 5th at Passaconaway Country Club in Litchfield. This year our golfers and sponsors raised over \$90,000 for several new pieces of equipment and support for programs for newborns for our Labor & Delivery, Maternity and Newborn Intensive Care Unit (NICU).

We were happy to welcome local event sponsors, donors, as well as many of our own Elliot physicians and staff at these events. We are grateful for the support of our Golf Committee, sponsors, vendors, and volunteers who continue to make these events a huge success!



## Delta Dental/Elliot Corporate 5k Road Race

More than 5,000 runners participated in this year's Delta Dental/Elliot Corporate 5K on August 7th. In its 32nd year, the race is the largest road race in New Hampshire and one of the largest 5K road races in New England! For the second year in a row, The Elliot had the largest corporate team of runners. The race raised nearly \$16,000 for the Solinsky Center for Cancer Care at The Elliot.



## Elliot Health System Gala

On Friday, October 3rd over 350 guests dressed in their Palm Beach best for The Elliot Health System Palm Royale Gala held at the DoubleTree in downtown Manchester. More than \$[xxx,xxx] was raised to support The Elliot's Comprehensive Multiple Sclerosis Clinic, Heart and Vascular Center, the Child Life Program, and Labor & Delivery.

# Thank you for being a special part of The Elliot community!

## Ways to Give

### ONLINE

Visit [elliotohospital.org/mjefoundation](https://elliotohospital.org/mjefoundation) to make a one-time or recurring gift.



scan to  
donate

### PHONE

Please call The Mary and John Elliot Charitable Foundation to make a gift by phone at **603-663-8934**.

### PLANNED GIVING

Please call Kelli Rafferty at 603-663-3091 for more information about leaving The Elliot in your estate plans.

### INSPIRED GIVING

Make a gift to honor an Elliot staff member, in memory of a loved one, or to celebrate an important milestone.

Visit:

[donate.elliotohospital.org/inspiredgiving](https://donate.elliotohospital.org/inspiredgiving)



scan to  
donate

### MATCHING GIFTS

You may be able to increase your gift through a matching gift program offered by your employer.

## 2026 *save the dates*

### Women's Leadership & Health Breakfast

Wednesday, February 18, 2026  
Bedford Event Center

### Elliot Health System Garden Party

Thursday, May 7, 2026  
Manchester Country Club

### Elliot Health System Golf Classic

Thursday, June 4, 2026  
Passaconaway Country Club

### Elliot Health System Walk for Hope

Sunday, June 7, 2026  
SNHU Main Campus

### Delta Dental/Elliot Road Race

Thursday, August 6, 2026  
Veteran's Park

### Elliot Health System Gala

Friday, October 9, 2026  
DoubleTree Manchester